



200 DPG

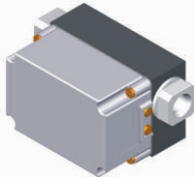
ΔP Range: 0 to 0.25 upto 70 bar
0 to 5 upto 1050 psi

COMBINATIONS

Gauge

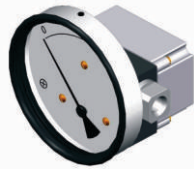


Switch



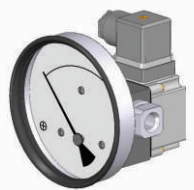
Gauge + switch

(with a terminal strip inside)



Gauge + switch

(with a DIN plug on top)



Specifications

Accuracy	±2% of the FSD (Ascending)
Migration	Minor from high to low port
Range	0-0.25 to 0-70 bar or equivalent range in other units
First marking on the scale	20% of the FSD
Sensing element	Piston
Wetted parts	Body material, SS 302 spring, ceramic magnet & seals
Case material & dial size	Stainless steel (SS 304): 2", 2.5", 3.5", 4", 4.5", 6.0" Engineering polymer: 2.5", 4.5", 6" Bayonet: 4.0"
Mounting	Direct, front flange, 2" pipe & surface mounting
Maximum working pressure	200 bar for Aluminum & Brass, 400 bar for SS & Monel
Maximum process temperature	0 to 80°C (32 to 175°F)
Body material	Aluminum, Brass, SS 316 & Monel
Seals	Buna-N, Viton, EPDM
Window	Float glass (Std.), toughened glass, acrylic & safety glass.
Connection	1/4" NPT(F) (Std.), 1/4" BSP(F) and others through adaptor
Porting	In-line, rear, bottom, in-line & bottom, in-line & back
Over range protection	Up to the max. working pressure from high & low side
Protection for gauge & switch	IP 65 / NEMA-4

Options

- Liquid filling (glycerine/ silicone)
- Red follower pointer
- Customer logo
- Dual scale
- Color band
- Filter mesh in (+) connection
- Reverse port (*pointer moves from right to left*)
- Descending calibration
- Thick body for 450bar application

Switches (Adjustable in 20-100% of FSD)

- 1 or 2 SPSTs with a DIN plug
- 1 or 2 SPSTs with a terminal strip
- 1 or 2 SPSTs with a built in relay
- 1 or 2 SPDTs with a DIN plug
- 1 or 2 SPDTs with a terminal strip

Available in engineering polymer (EP) Case



- Removable glass
- Strong and durable
- Panel mounting possible
- Condensation can be cleaned
- Light weight

MOUNTING BRACKETS

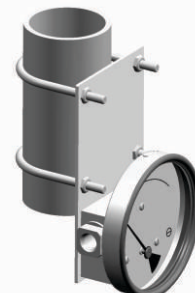
Surface mounting



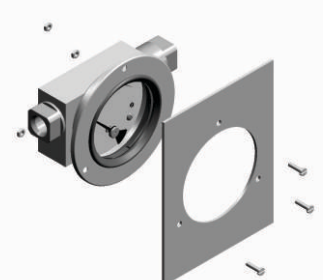
Horizontal pipe mounting



Vertical pipe mounting



Panel / Flange mounting



SELECT MODEL

1 Series	200 DPG	
2 Type	G Gauge GS Gauge + Switch	S Switch
3 Body material	A Aluminum B Brass	S SS-316 M Monel
4 Dial size	2.0 2.0" (50mm) 2.5 2.5" (63 mm) 3.5 3.5" (80 mm)	4.0 4.0" (100mm) 4.5 4.5" (115 mm) 6.0 6.0" (150 mm)
5 Connection	4N 1/4" NPT (F) (Std.) ZZ Special connection sizes using adaptor	4B 1/4" BSP (F)
6 Porting	1 In-line (Std.) 2 Rear / Back 3 Bottom	6 In-line & bottom 8 In-line & back
7 Case	S4 SS 304 (Std.) F4 SS 304 flange EP Engineering polymer (available in 2.5", 4.5", 6.0" only) BF Bayonet (available in 4.0" safety glass only)	S6 SS 316
8 Window	F Glass (Std.) T Toughened glass	A Acrylic L Safety glass
9 Seals/Diaphragm	B Buna-N (Std.) V Viton	E EPDM

Advantages :

Instrument automatically resets after line surges and cold start. This eliminates balancing of differential pressure instrument after such events.

Notes

- No mounting bracket for back porting.
- Bracket on request for bottom porting.
- Switch not available for gauge with back porting. However, it can be offered in 32mm thick body (option K) with switch on top.
- For SS 316 case, please contact factory (MOQ applies).
- Liquid filling + Follower pointer available.
- Switch adjustment range between 20-100% of full scale deflection (FSD). For specific details, please contact factory.
- Mounting bracket: Aluminum (Standard) ; SS (Optional)

10 Switch

Select option & Specifications

0	None
1	One SPST, with a DIN plug †
2	One SPST, with a terminal strip
2A	One SPST, with built in relay
3	Two SPSTs, with a DIN plug †
4	Two SPSTs, with a terminal strip
4A	Two SPSTs. with built in relay

+

SPST Specifications (AC/DC max)

1 Standard	2	3	4
10 VA	40 VA	100 VA	60 VA
100 V	230 V	300 V	240 V
0.5 Amp	1 Amp	1 Amp	3 Amp
Adjustable	Adjustable	Adjustable	Adjustable

5	One SPDT, with a DIN plug †
6	One SPDT, with a terminal strip
7	Two SPDTs, with two DIN plugs
8	Two SPDTs, with a terminal strip

+

SPDT Specifications (AC/DC max)

1 Standard	2	3	4
3 VA	5 VA	5 VA	60 VA
30 V	125 V	175 V	400 V
0.3 Amp	0.25 Amp	0.25 Amp	1 Amp
Adjustable	Adjustable	Adjustable	Factory Set

Example: Switch selection 21 is 1 SPST with terminal strip with switch specifications 10VA, 100V, 0.5Amp
† DIN plug mounted on the top.

11 Range

Standard ranges : (Other ranges & units on request)

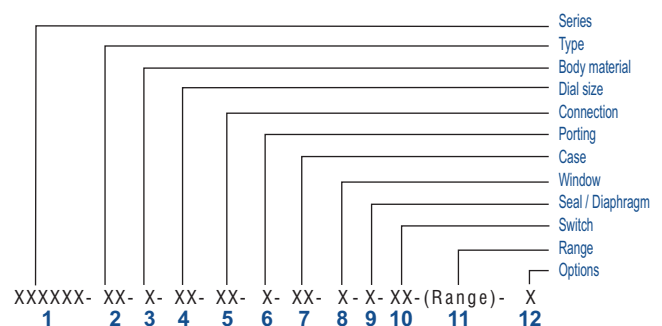
Kg/cm ²	0.25	-	0.5	0.75	1	-	1.6	2	2.5	3	3.5	4	5	-	6	7	9	10
bar	0.25	-	0.5	0.75	1	-	1.6	2	2.5	3	3.5	4	5	-	6	7	9	10
mbar	250	-	500	750	1000	-	-	-	-	-	-	-	-	-	-	-	-	-
psi	-	5	8	-	15	20	25	30	-	40	50	60	-	80	-	100	-	-
kPa	25	-	50	75	100	-	160	200	250	300	350	400	500	-	600	700	900	1000

12 Options

0	None
A	Glycerine*
B	Red follower pointer on acrylic window *
C	Customer Logo
D	Dual scale
E	Color band
F	Filter mesh in (+) connection
G	Reverse Port**
H	Descending calibration (long delivery time)
N	NACE
S	Silicone oil*
I	Oxygen service (Contact factory)
K	32mm thick body for high pressure application (350bar for Al, 450bar for SS)
P	DIN plug at back on plastic switch cover
Q	Metallic switch cover with tamper proof plastic plugs ***
M1	2" horizontal pipe mounting bracket
M2	Surface mounting bracket
M3	2" vertical pipe mounting bracket

* Affects accuracy
** Pointer moves from right to left
*** Minimum Order Quantity applies

Ordering code sequence



Contact factory for special execution.