



Akron Electric (USA)

FCG (India)

EX 400DGC

ΔP Range: 0 to 100 upto 600 mm H₂O
0 to 4 upto 25 inch H₂O

COMBINATIONS

Gauge + switch
(with a terminal strip inside)



Switch



Gauge + switch
(Without Ex-proof enclosure)

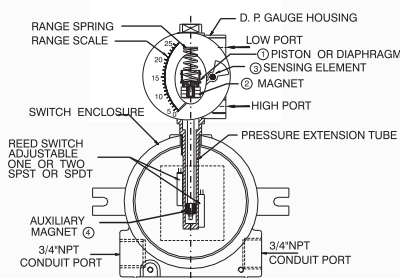


Switch*
(Without Ex-proof enclosure)



*Locally available explosion proof enclosures can be used

ASSEMBLY



Specifications

Accuracy	±2% of the FSD (Ascending)
Migration	No migration. Zero leakage from high to low port
Range	0-100 to 0-600 mmH ₂ O or equivalent range in other units
First marking on the scale	15% of the FSD
Sensing element	Diaphragm
Wetted parts	Diaphragm, body material, SS 302 spring & ceramic magnet
Case material & dial size	Stainless steel (SS 304): 2.5", 3.5", 4", 4.5", 6.0" Engineering polymer: 2.5", 4.5", 6.0"
Mounting	As per the explosion proof box drawings
Maximum working pressure	35 bar / 500 psi.
Maximum process temperature	0 to 80°C (32 to 175°F)
Body material	Aluminum, Brass & SS 316
Diaphragm	Buna-N, Viton, EPDM
Window	Float glass(Std.), toughened glass, acrylic & safety glass.
Connection	1/4" NPT(F) (Std.), 1/4" BSP(F) through adaptor
Porting	Bottom (right side), back
Over range protection	Up to the max. working pressure from high side
Protection for gauge & switch	IP 65 / NEMA-4

Options

Liquid filling (glycerine/ silicone)	1 or 2 SPSTs with a terminal strip
Red follower pointer	1 or 2 SPDTs with a terminal strip
Customer logo	
Dual scale	
Color band	
Filter mesh in (+) connection	
Descending calibration	

Available in engineering polymer (EP) Case

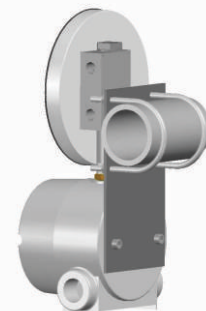
- Removable glass
- Strong and durable
- Panel mounting possible
- Condensation can be cleaned
- Light weight

Enclosure Approvals

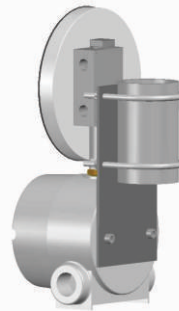
Ex-proof enclosure make	Certification	Electrical connection	Mounting
Akron Electric USA	UL, CSA, FM, CENELEC, KEMA / ATEX approved. Compliance to EN 50 014:1971+A1...A5 and EN 50 018: 1977+A1...A3. Ref: UL:E139669 / CSA:LR86146-5 KEMA: 03ATEX2460 U 0539 Ex II 2G EEx d II C	2 X 3/4" NPTF conduit ports on either side as shown	Two slots provided suitable for M6 / 1/4" UNC screw.
FCG India	Compliance to EN 50014: 1977 + A1:1999+A2:1999 and EN 50281-1-1:1998 + A1:2002 Ref: DNV-2006-OSL-ATEX-0075 / Ex II 2 GD EEx d IIC T6	3 X 3/4" ET conduit ports as shown.	Two elliptical holes provided suitable for M6 / 1/4"UNC screw.

MOUNTING BRACKETS

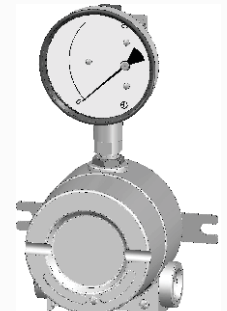
Horizontal pipe mounting



Vertical pipe mounting



Surface mounting



SELECT MODEL

1 Series	EX 400DGC	
2 Type	GS Gauge + Switch	S Switch
3 Body material	A Aluminum S SS-316	B Brass
4 Dial size	2.5 2.5" (63 mm) 3.5 3.5" (80 mm) 4.0 4.0" (100 mm)	4.5 4.5" (115 mm) 6.0 6.0" (150 mm)
5 Connection	4N 1/4" NPT (F) (Std.) ZZ Special connection sizes using adaptor	4B 1/4" BSP (F)
6 Porting	3 Bottom (Right side)	2 Back
7 Case	S4 SS 304 (Std.) F4 SS 304 flange EP Engineering polymer (available in 2.5", 4.5", 6" only)	S6 SS 316
8 Window	F Glass (Std.) T Toughened glass	A Acrylic L Safety glass
9 Seals/Diaphragm	B Buna-N (Std.) V Viton	E EPDM
10 Switch	Select option & Specifications	

Advantages :
Instrument automatically resets after line surges and cold start.
This eliminates balancing of differential pressure instrument after such events.

Notes

- Both enclosures have provision for surface mounting.
- For SS 316 case, please contact factory (MOQ applies).
- Liquid filling + Follower pointer available.
- Switch adjustment range between 40-100% of full scale deflection (FSD). For specific details, please contact factory.
- Minimum Order Quantity (MOQ) applies for 6.0" (150mm) dial.
- For electrical connection details, please refer to the datasheet.
- Mounting bracket: Aluminum (Standard) ; SS (Optional)

0	None
2	One SPST, with a terminal strip
4	Two SPSTs, with a terminal strip

+

SPST Specifications (AC/DC max)			
1 Standard	2	3	4
10 VA	40 VA	100 VA	60 VA
100 V	230 V	300 V	240 V
0.5 Amp	1 Amp	1 Amp	3 Amp
Adjustable	Adjustable	Adjustable	Adjustable

6	One SPDT, with a terminal strip
8	Two SPDTs, with a terminal strip

+

SPDT Specifications (AC/DC max)		
1 Standard	2	3
3 VA	5 VA	5 VA
30 V	125 V	175 V
0.3 Amp	0.25 Amp	0.25 Amp
Adjustable	Adjustable	Adjustable

Example: Switch selection 21 is 1 SPST with terminal strip with switch specifications 10VA, 100V, 0.5Amp

11 Range

Standard ranges : (Other ranges & units on request)

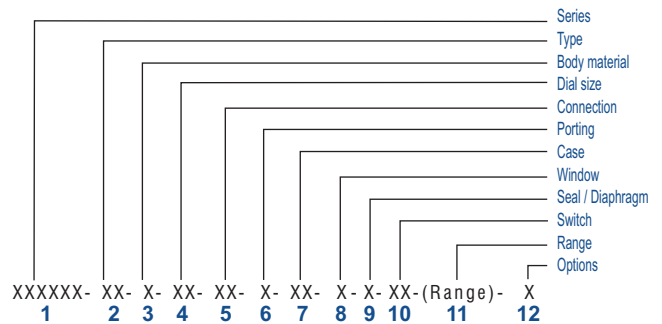
mm H2O	-	100	125	250	600
In. H2O	-	4	5	10	25
mbar	-	5	-	25	60
kPa	-	-	1.25	2.5	6

12 Options

- 0 None
- A Glycerine *
- B Red follower pointer on acrylic window *
- C Customer Logo
- D Dual scale
- E Colour band
- F Filter mesh in (+) connection
- H Descending calibration (long delivery time)
- N NACE
- S Silicone oil*
- I Oxygen service (Contact factory)
- M1 2" horizontal pipe mounting bracket
- M3 2" vertical pipe mounting bracket

* Affects accuracy

Ordering code sequence



Contact factory for special execution.