

**Center Zero Gauge**

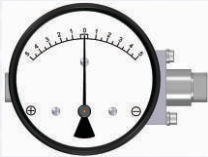


**CZ 300DGC**

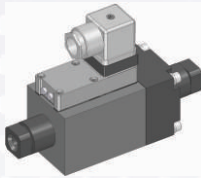
**ΔP Range:** 0.075 - 0 - 0.075 bar  
upto 4 - 0 - 4 bar

**COMBINATIONS**

**Gauge**



**Switch**



**Gauge + switch**  
(with a terminal strip inside)



**Gauge + switch**  
(with a DIN plug on top)



**Specifications**

Accuracy	±2% of the FSD (Ascending)
Migration	No migration ; Zero leakage from high to low port
Range	0.075-0-0.075 to 4-0-4 bar or equivalent ranges in other units
First marking on the scale	20% of the FSD
Sensing element	Diaphragm
Wetted parts	Diaphragm, body material, SS 302 spring & ceramic magnet
Case material & dial size	Stainless steel (SS 304): 2.5", 3.5", 4", 4.5", 6" Engineering polymer: 2.5", 4.5", 6" Bayonet: 4"
Mounting	Direct, front flange, 2" pipe & surface mounting
Maximum working pressure	100 bar / 1500 psi
Maximum process temperature	0 to 80°C (32 to 175°F)
Body material	Aluminum, Brass, SS 316 & Monel
Diaphragm	Buna-N, Viton, EPDM
Window	Float glass (Std.), toughened glass, acrylic & safety glass
Connection	1/4" NPT(F) (Std.), 1/4" BSP(F) and others through adaptor
Porting	In-line, rear, bottom, bottom & vent, in-line & vent, in-line & bottom in-line & back, bottom vent in-line
Over range protection	Up to the max. working pressure from high side
Protection for gauge & switch	IP 65 / NEMA-4

**Options**

- Liquid filling
- Customer logo
- Dual scale
- Colour band

**Switches**

- 1 or 2 SPDTs with a terminal strip
- 1 or 2 SPDTs with a DIN plug

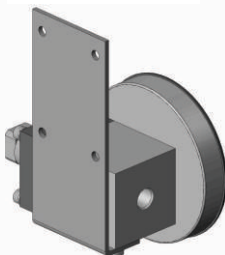
**Available in engineering polymer (EP) Case**



- Removable glass
- Strong and durable
- Panel mounting possible
- Condensation can be cleaned
- Light weight

**MOUNTING BRACKETS**

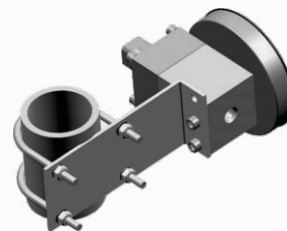
**Surface mounting**



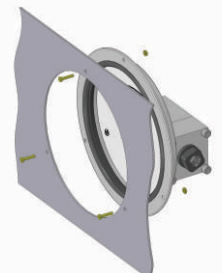
**Horizontal pipe mounting**



**Vertical pipe mounting**



**Panel / Flange mounting**



## SELECT MODEL

<b>1 Series</b>	<b>CZ 300DGC</b>	
<b>2 Type</b>	G Gauge GS Gauge + Switch	S Switch
<b>3 Body material</b>	A Aluminum B Brass	S SS-316 M Monel
<b>4 Dial size</b>	2.5 2.5" (63mm) 3.5 3.5" (80 mm) 4.0 4.0" (100mm)	4.5 4.5" (115 mm) 6.0 6.0" (150 mm)
<b>5 Connection</b>	4N 1/4" NPT (F) (Std.) ZZ Special connection sizes using adaptor	4B 1/4" BSP (F)
<b>6 Porting</b>	1 In-line (Std.) 2 Rear / Back 3 Bottom 4 Bottom & vent	5 In-line & vent 6 In-line & bottom 7 Bottom vent & in-line 8 In-line & back
<b>7 Case</b>	S4 SS 304 (Std.) F4 SS 304 flange EP Engineering polymer (available in 2.5", 4.5", 6.0" only) BF Bayonet (available in 4.0" safety glass only)	S6 SS 316
<b>8 Window</b>	F Glass (Std.) T Toughened glass	A Acrylic L Safety glass
<b>9 Seals/Diaphragm</b>	B Buna-N (Std.) V Viton	E EPDM
<b>10 Switch</b>	Select option & specifications	

### Advantages :

Instrument automatically resets after line surges and cold start.  
This eliminates balancing of differential pressure instrument after such events.

### Notes

- Switch option not available with inline vent / bottom vent porting.
- Top vent not available with switch option.
- For SS 316 case, please contact factory (MOQ applies).
- Liquid filling + Follower pointer available.
- For Switch adjustment range and other specific details regarding the switch, please contact factory.
- Mounting bracket: Aluminum (Standard) ; SS (Optional)

5	One SPDT, with a DIN plug †
6	One SPDT, with a terminal strip
7	Two SPDTs, with two DIN plugs
8	Two SPDTs, with a terminal strip

+

### SPDT Specifications (AC/DC max)

1 Standard	2	3
3 VA	5 VA	5 VA
30 V	125 V	175 V
0.3 Amp	0.25 Amp	0.25 Amp
Adjustable	Adjustable	Adjustable

**Example:** Switch selection 51 is 1 SPDT with DIN plug with switch specifications 3VA, 30V, 0.3Amp

† DIN plug mounted on the top.

## 11 Range

### Standard ranges : (Other ranges & units on request)

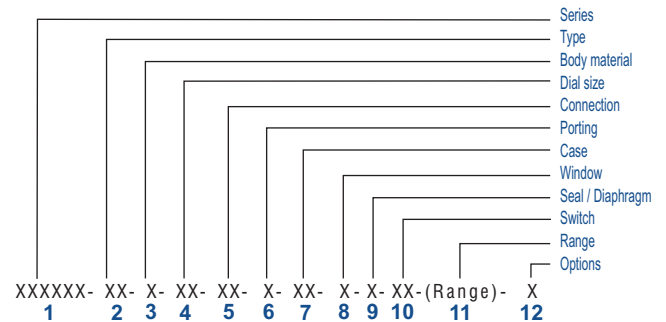
<b>Kg/cm<sup>2</sup></b>	0.075	0.25	-	0.5	0.75	1	-	1.6	2	2.5	3	-	4
<b>bar</b>	0.075	0.25	-	0.5	0.75	1	-	1.6	2	2.5	3	-	4
<b>mbar</b>	75-	250	-	-	750	-	-	-	-	-	-	-	-
<b>psi</b>	1	-	5	8	-	15	20	25	30	-	40	50	60
<b>kPa</b>	-	25	-	50	75	100	-	160	200	250	300	-	400

## 12 Options

- 0 None
- A Glycerine\*
- B Red follower pointer on acrylic window \*
- C Customer Logo
- D Dual scale
- E Colour band
- F Filter mesh in (+) connection
- N NACE
- S Silicone oil\*
- I Oxygen service (Contact factory)
- M1 2" horizontal pipe mounting bracket
- M2 Surface mounting bracket
- M3 2" vertical pipe mounting bracket

\* Affects accuracy

## Ordering code sequence



Contact factory for special execution.