



400 DGC

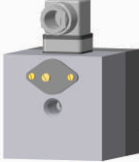
ΔP Range: 0 to 25 upto 600 mm H₂O
0 to 1 upto 25 inch H₂O

COMBINATIONS

Gauge



Switch



Gauge + switch (with a DIN plug on top)



Specifications

Accuracy	±2% of the FSD (Ascending)
Migration	No migration. Zero leakage from high to low port
Range	0-25 to 0-600 mm H ₂ O or similar ranges in other units
First marking on the scale	15% of the FSD
Sensing element	Diaphragm
Wetted parts	Diaphragm, body material, SS 302 spring & ceramic magnet
Case material & dial size	Stainless steel (SS 304): 2.5", 3.5", 4", 4.5", 6.0" Engineering polymer: 2.5", 4.5", 6" Bayonet: 4.0"
Mounting	Direct, front flange, 2" pipe & surface mounting
Maximum working pressure	35 bar / 500 psi.
Maximum process temperature	0 to 80°C (32 to 175°F)
Body material	Aluminum, SS 316
Diaphragm	Buna-N, Viton, EPDM
Window	Float glass (Std.), toughened glass, acrylic & safety glass
Connection	1/4" NPT - F (Std.), Optional 1/4" BSP - F with adaptor
Porting	In-line, rear, bottom, bottom & vent, in-line & vent, in-line & bottom.
Over range protection	Up to the max. working pressure from high side
Protection for gauge & switch	IP 65 / NEMA-4

Options

Liquid filling	1 or 2 SPSTs with a DIN plug
Red follower pointer	1 or 2 SPSTs with a terminal strip
Customer logo	1 SPST with a built in relay
Dual scale	1 or 2 SPDTs with a terminal strip
Colour band	1 or 2 SPDTs with a DIN plug
Filter mesh in (+) connection	
Descending calibration	

Switches (Adjustable in 20-80% of FSD)

1 or 2 SPSTs with a DIN plug
1 or 2 SPSTs with a terminal strip
1 SPST with a built in relay
1 or 2 SPDTs with a terminal strip
1 or 2 SPDTs with a DIN plug

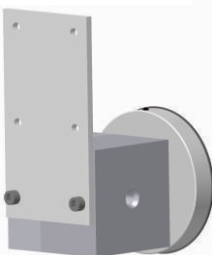
Available in engineering polymer (EP) Case



- Removable glass
- Strong and durable
- Panel mounting possible
- Condensation can be cleaned
- Light weight

MOUNTING BRACKETS

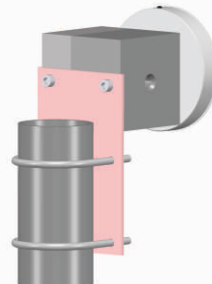
Surface mounting



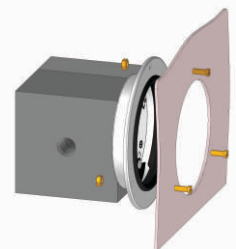
Horizontal pipe mounting



Vertical pipe mounting



Panel / Flange mounting



SELECT MODEL

1 Series	400 DGC	
2 Type	G Gauge GS Gauge + Switch	S Switch
3 Body material	A Aluminum S SS-316	
4 Dial size	2.5 2.5" (63 mm) 3.5 3.5" (80 mm) 4.0 4.0" (100mm)	4.5 4.5" (115 mm) 6.0 6.0" (150 mm)
5 Connection	4N 1/4" NPT (F) (Std.) ZZ Special connection sizes using adaptor	4B 1/4" BSP (F)
6 Porting	1 In-line (Std.) 2 Rear / Back 3 Bottom 4 Bottom & vent	5 In-line & vent 6 In-line & bottom 8 In-line & back
7 Case	S4 SS 304 (Std.) F4 SS 304 flange EP Engineering polymer (available in 2.5", 4.5", 6.0" only) BF Bayonet (available in 4.0" safety glass only)	S6 SS 316
8 Window	F Glass (Std.) T Toughened glass	A Acrylic L Safety glass
9 Seals/Diaphragm	B Buna-N (Std.) V Viton	E EPDM

Advantages :

Instrument automatically resets after line surges and cold start.
This eliminates balancing of differential pressure instrument after such events.

Notes

- 1.6% accuracy available on request.
- For SS 316 case, please contact factory (MOQ applies).
- Liquid filling + Follower pointer available.
- Switch adjustment range between 20-80% of full scale deflection (FSD). For specific details, please contact factory.
- Mounting bracket: Aluminum (Standard) ; SS (Optional)

10 Switch

0	None
1	One SPST, with a DIN plug †
2	One SPST, with a terminal strip
2A	One SPST, with built in relay
3	Two SPSTs, with a DIN plug †
4	Two SPSTs, with a terminal strip
4A	Two SPSTs. with built in relay

+

SPST Specifications (AC/DC max)

1 Standard	2	3	4
10 VA	40 VA	100 VA	60 VA
100 V	230 V	300 V	240 V
0.5 Amp	1 Amp	1 Amp	3 Amp
Adjustable	Adjustable	Adjustable	Adjustable

5	One SPDT, with a DIN plug †
6	One SPDT, with a terminal strip
7	Two SPDTs, with two DIN plugs
8	Two SPDTs, with a terminal strip

+

SPDT Specifications (AC/DC max)

1 Standard	2	3
3 VA	5 VA	5 VA
30 V	125 V	175 V
0.3 Amp	0.25 Amp	0.25 Amp
Adjustable	Adjustable	Adjustable

Example: Switch selection 21 is 1 SPST with terminal strip with switch specifications 10VA, 100V, 0.5Amp

† DIN plug mounted on the top.

11 Range

Standard ranges : (Other ranges & units on request)

mm H2O	25	50	125	250	600
In. H2O	1	2	5	10	25
mbar	-	5	-	25	60
kPa	0.25	0.5	1.25	2.5	6

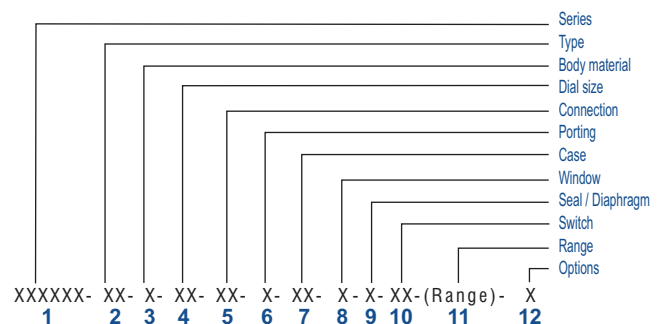
12 Options

0	None
A	Glycerine*
B	Red follower pointer on acrylic window *
C	Customer Logo
D	Dual scale
E	Colour band
F	Filter mesh in (+) connection
G	Reverse Port**
H	Descending calibration (long delivery time)
N	NACE
S	Silicone oil*
I	Oxygen service (Contact factory)
M1	2" horizontal pipe mounting bracket
M2	Surface mounting bracket
M3	2" vertical pipe mounting bracket

* Affects accuracy

** Pointer moves from right to left

Ordering code sequence



Contact factory for special execution.