

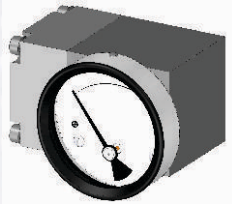


320 DGC

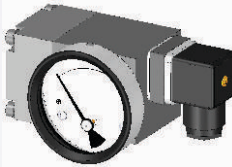
ΔP Range: 0 to 0.075 upto 4 bar
0 to 1 upto 60 psi

COMBINATIONS

Gauge



Gauge + Switch

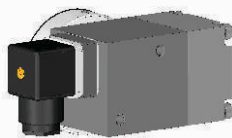


Specifications

Accuracy	±5% of the FSD (Ascending)
Migration	No migration ; Zero leakage from high to low port
Range	0-0.075 to 0-4 bar or equivalent ranges in other units
Dial marking	Color bands
Sensing element	Diaphragm
Wetted parts	Diaphragm, body material, SS 302 spring & ceramic magnet
Case material & dial size	Stainless steel (SS 304): 2", 2.5" Engineering polymer: 2.5"
Mounting	2 M6 mounting holes
Maximum working pressure	70 bar / 1000 psi
Maximum process temperature	0 to 80°C (32 to 175°F)
Body material	Aluminum, SS 316 & Brass
Diaphragm	Buna-N, Viton, EPDM
Window	Float glass (Std.), toughened glass, acrylic & safety glass
Connection	1/8" NPT (F)
Porting	Bottom (Std.), Rear
Over range protection	Up to the max. working pressure from high side
Protection for gauge & switch	IP 65 / NEMA-4

MOUNTING

2M6 mounting holes



Options

Customer logo	1 or 2 SPSTs with a DIN plug suitable for Pg9
Filter mesh in (+) connection	1 SPDT with a DIN plug suitable for PG9

Switches (Factory set at 50% of FSD)

Available in engineering polymer (EP) Case



- Removable glass
- Strong and durable
- Panel mounting possible
- Condensation can be cleaned
- Light weight

SELECT MODEL

- 1 Series** 320 DGC
- 2 Type** G Gauge S Switch
GS Gauge + Switch
- 3 Body material** A Aluminum S SS-316
B Brass
- 4 Dial size** 2.0 2.0" (50mm)
2.5 2.5" (63 mm)
- 5 Connection** 8N 1/8" NPT (F) (Std.)
- 6 Porting** 2 Rear / Back
3 Bottom
- 7 Case** S4 SS 304 (Std.) S6 SS 316
EP Engineering polymer (available in 2.5" only)
- 8 Window** F Glass (Std.) A Acrylic
T Toughened glass L Safety glass
- 9 Seals/Diaphragm** B Buna-N (Std.) E EPDM
V Viton
- 10 Switch** Select option & Specifications

Advantages :

Instrument automatically resets after line surges and cold start.
This eliminates balancing of differential pressure instrument after such events.

Notes

- Color band standard.
- For SS 316 case, please contact factory (MOQ applies).
- Switch factory set at 50% of full scale deflection (FSD).

0	None
1	One SPST, with a DIN plug
3	Two SPSTs, with a DIN plug

Example: Switch selection 11 is 1 SPST with DIN plug with switch specifications 10VA, 100V, 0.5Amp

+

SPST Specifications (AC/DC max)

1 Standard	2	3	4
10 VA	40 VA	100 VA	60VA
100 V	230 V	300 V	240V
0.5 Amp	1 Amp	1 Amp	3 Amp
Factory set fixed			

5	One SPDT, with a DIN plug
---	---------------------------

+

SPDT Specifications (AC/DC max)

1 Standard	2	3	-
3 VA	5 VA	5 VA	-
30 V	125 V	175 V	-
0.3 Amp	0.25 Amp	0.25 Amp	-
Factory set fixed			

11 Range

Standard ranges : (Other ranges & units on request)

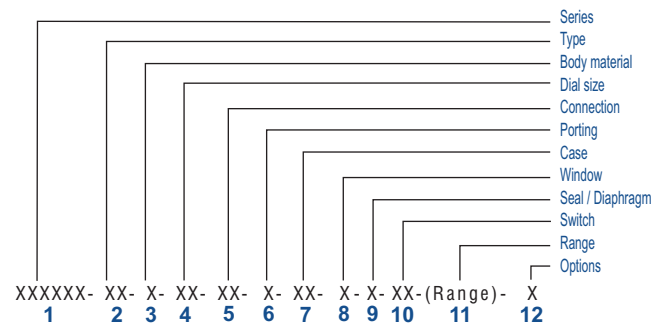
Kg/cm ²	0.075	0.25	-	0.5	0.75	1	-	1.6	2	2.5	3	-	4
bar	0.075	0.25	-	0.5	0.75	1	-	1.6	2	2.5	3	-	4
mbar	75	250	-	-	750	-	-	-	-	-	-	-	-
psi	1	-	5	8	-	15	20	25	30	-	40	50	60
kPa	-	25	-	50	75	100	-	160	200	250	300	-	400

12 Options

- 0 None
A Glycerine*
C Customer Logo
E Color band (Standard. Please include this in product code)
F Filter mesh in (+) connection

* Affects accuracy

Ordering code sequence



Contact factory for special execution.