



300 DGC

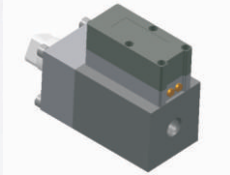
ΔP Range: 0 to 0.075 upto 4 bar
0 to 1 upto 60 psi

COMBINATIONS

Gauge

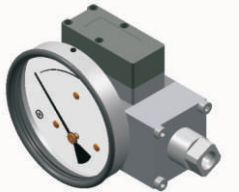


Switch



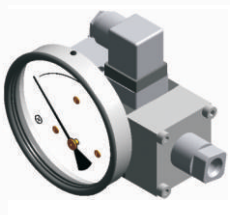
Gauge + switch

(with a terminal strip inside)



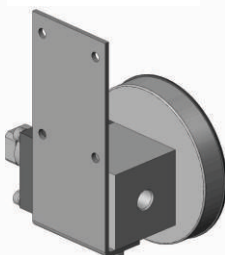
Gauge + switch

(with a DIN plug on top)



MOUNTING BRACKETS

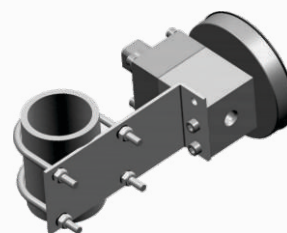
Surface mounting



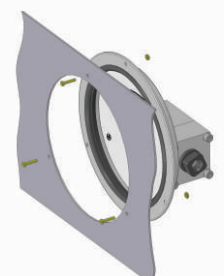
Horizontal pipe mounting



Vertical pipe mounting



Panel / Flange mounting



Specifications

Accuracy	±2% of the FSD (Ascending)
Migration	No migration ; Zero leakage from high to low port
Range	0-0.075 to 0-4 bar or equivalent ranges in other units
First marking on the scale	15% of the FSD
Sensing element	Diaphragm
Wetted parts	Diaphragm, body material, SS 302 spring & ceramic magnet
Case material & dial size	Stainless steel (SS 304): 2", 2.5", 3.5", 4", 4.5", 6" Engineering polymer: 2.5", 4.5", 6" Bayonet: 4"
Mounting	Direct, front flange, 2" pipe & surface mounting
Maximum working pressure	100 bar / 1500 psi
Maximum process temperature	0 to 80°C (32 to 175°F)
Body material	Aluminum, Brass, SS 316 & Monel
Diaphragm	Buna-N, Viton, EPDM
Window	Float glass (Std.), toughened glass, acrylic & safety glass
Connection	1/4" NPT(F) (Std.), 1/4" BSP(F) and others (through adaptor)
Porting	In-line, rear, bottom, bottom & vent, in-line & vent, in-line & bottom, in-line & back, bottom vent & inline
Over range protection	Up to the max. working pressure from high side
Protection for gauge & switch	IP 65 / NEMA-4

Options

Switches (Adjustable in 30-100% of FSD)

Liquid filling	1 or 2 SPSTs with a DIN plug
Red follower pointer	1 or 2 SPSTs with a terminal strip
Customer logo	1 SPST with a built in relay
Dual scale	1 or 2 SPDTs with a terminal strip
Colour band	1 or 2 SPDTs with a DIN plug
Filter mesh in (+) connection	
Descending calibration	

Instrument can be calibrated with square root scale for flow measurement.

Available in engineering polymer (EP) Case



- Removable glass
- Strong and durable
- Panel mounting possible
- Condensation can be cleaned
- Light weight

SELECT MODEL

1 Series	300 DGC	
2 Type	G Gauge GS Gauge + Switch	S Switch
3 Body material	A Aluminum B Brass	S SS-316 M Monel
4 Dial size	2.0 2.0" (50mm) 2.5 2.5" (63 mm) 3.5 3.5" (80 mm)	4.0 4.0" (100mm) 4.5 4.5" (115 mm) 6.0 6.0" (150 mm)
5 Connection	4N 1/4" NPT (F) (Std.) ZZ Special connection sizes using adaptor	4B 1/4" BSP (F)
6 Porting	1 In-line (Std.) 2 Rear / Back 3 Bottom 4 Bottom & vent	5 In-line & vent 6 In-line & bottom 7 Bottom vent & in-line 8 In-line & back
7 Case	S4 SS 304 (Std.) F4 SS 304 flange EP Engineering polymer (available in 2.5", 4.5", 6.0" only) BF Bayonet (available in 4.0" safety glass only)	S6 SS 316
8 Window	F Glass (Std.) T Toughened glass	A Acrylic L Safety glass
9 Seals/Diaphragm	B Buna-N (Std.) V Viton	E EPDM

Advantages :

Instrument automatically resets after line surges and cold start.
This eliminates balancing of differential pressure instrument after such events.

Notes

- Up to 1% accuracy available on request.
- Top vent not available with switch option.
- For SS 316 case, please contact factory (MOQ applies).
- Liquid filling + Follower pointer available.
- Switch adjustment range between 30-100% of full scale deflection (FSD). For specific details, please contact factory.
- Mounting bracket: Aluminum (Standard) ; SS (Optional)

10 Switch

Select option & specifications

0	None
1	One SPST, with a DIN plug †
2	One SPST, with a terminal strip
2A	One SPST, with built in relay
3	Two SPSTs, with a DIN plug †
4	Two SPSTs, with a terminal strip

+

SPST Specifications (AC/DC max)

1 Standard	2	3	4
10 VA	40 VA	100 VA	60 VA
100 V	230 V	300 V	240 V
0.5 Amp	1 Amp	1 Amp	3 Amp
Adjustable	Adjustable	Adjustable	Adjustable

5	One SPDT, with a DIN plug †
6	One SPDT, with a terminal strip
7	Two SPDTs, with two DIN plugs
8	Two SPDTs, with a terminal strip

+

SPDT Specifications (AC/DC max)

1 Standard	2	3	4
3 VA	5 VA	5 VA	60 VA
30 V	125 V	175 V	400 V
0.3 Amp	0.25 Amp	0.25 Amp	1 Amp
Adjustable	Adjustable	Adjustable	Factory Set

Example: Switch selection 21 is 1 SPST with terminal strip with switch specifications 10VA, 100V, 0.5Amp

† DIN plug mounted on the top.

11 Range

Standard ranges : (Other ranges & units on request)

Kg/cm ²	0.075	0.25	-	0.5	0.75	1	-	1.6	2	2.5	3	-	4
bar	0.075	0.25	-	0.5	0.75	1	-	1.6	2	2.5	3	-	4
mbar	75	250	-	-	750	-	-	-	-	-	-	-	-
psi	1	-	5	8	-	15	20	25	30	-	40	50	60
kPa	-	25	-	50	75	100	-	160	200	250	300	-	400

12 Options

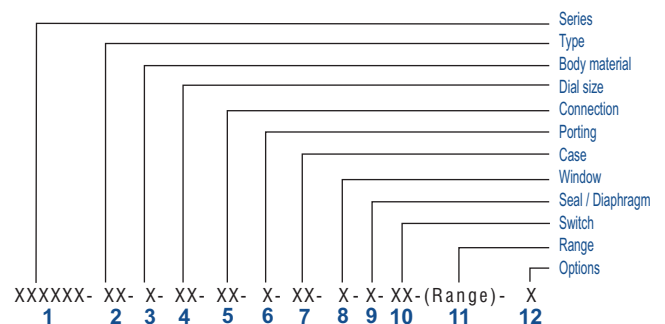
0	None
A	Glycerine*
B	Red follower pointer on acrylic window *
C	Customer Logo
D	Dual scale
E	Colour band
F	Filter mesh in (+) connection
G	Reverse Port**
H	Descending calibration (long delivery time)
N	NACE
S	Silicone oil*
I	Oxygen service (Contact factory)
M1	2" horizontal pipe mounting bracket
M2	Surface mounting bracket
M3	2" vertical pipe mounting bracket
Q	Metallic switch cover with tamper proof plastic plugs ***

* Affects accuracy

** Pointer moves from right to left

*** Minimum order quantity applies

Ordering code sequence



Contact factory for special execution.