



115 DPG

ΔP Range: 0 to 0.15 upto 2 bar
0 to 3 upto 30 psi

COMBINATIONS

Gauge



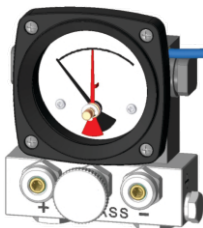
Gauge+switch
(with blue exi cable 2m)



Gauge+Manifold



Gauge+switch+Manifold
(with blue exi cable 2m)



Specifications

Accuracy	±20% of the FSD (±10% on request) Ascending.
Migration	Minor from high to low port
Range	0-0.15 to 0-2 bar or equivalent range in other units
First marking on the scale	20% of the FSD
Sensing element	Piston
Wetted parts	Body material, SS 302 spring, ceramic magnet & seals
Case material & dial size	Engineering polymer: 2.5"
Mounting	Direct
Maximum working pressure	100 bar
Design temperature	-20° C to 80° C (-4° F to 176° F)
Body material	Aluminum
Seals	Buna-N, Viton
Window	Acrylic
Connection	1/4" BSP (F)
Porting	Bottom
Over range protection	Up to the max. working pressure from high & low side
Protection for gauge & switch	IP 66 / NEMA-4

Options

Switches (Factory set between 30-100% of FSD)

Red follower pointer	1 SPST or SPDT with Blue exi cable 2m
Customer logo	
Dual scale	
Color band	
Reverse port (only gauge)	(pointer moves from right to left)

3 Way Manifold for Differential Pressure Gauge

Connections	1/4" BSP
Max working Pressure	100 bar
Hydrostatic test	150 bar
Body material	Steel EN1A Pb (Plated)
PIN	Brass (IS:319/89I)
O-Rings	Nitrile

